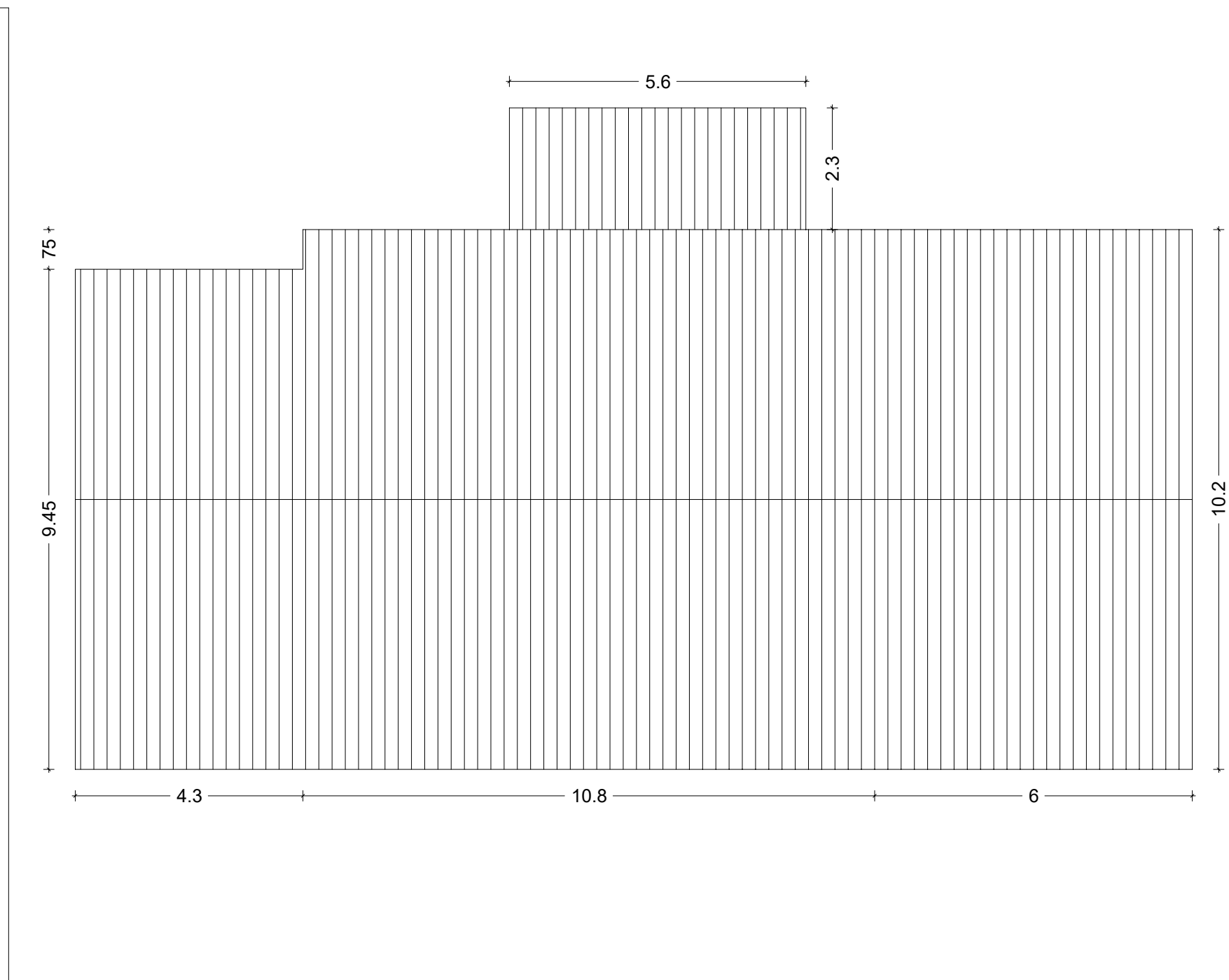




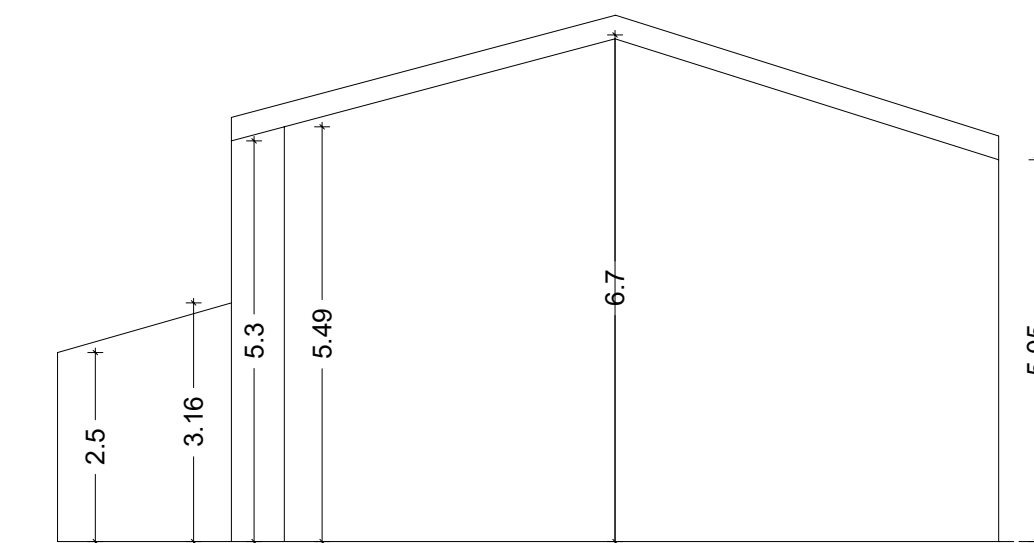
estratto catastrale - scala 1:1.000



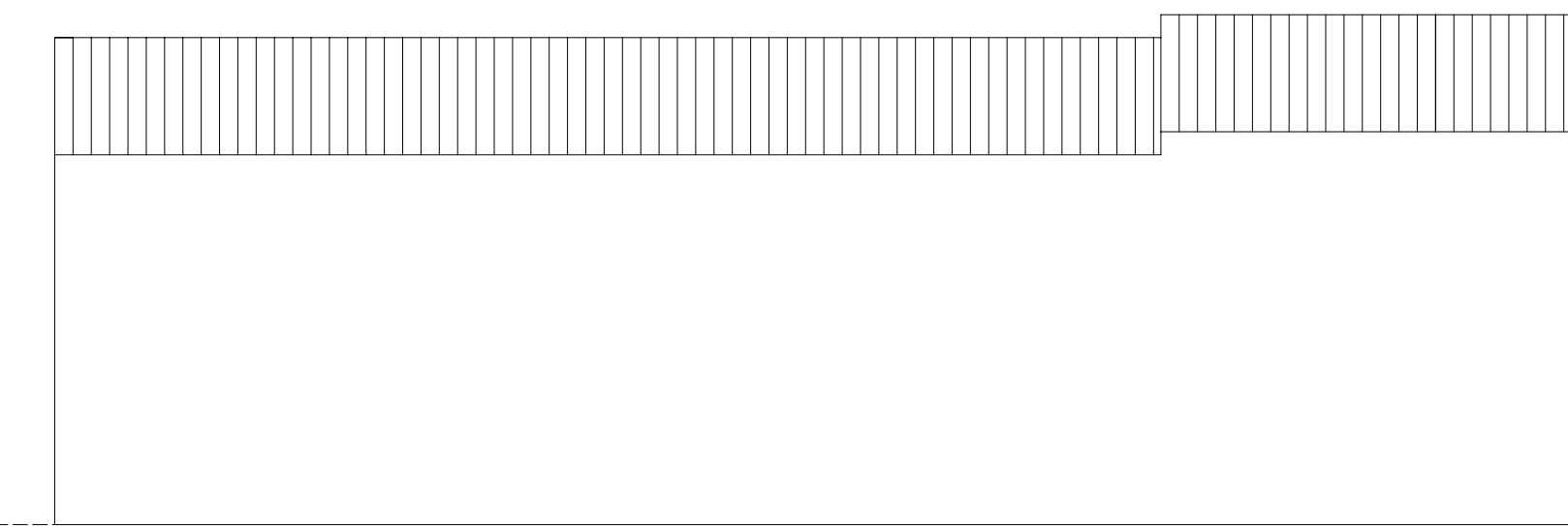
perimetro ed area nucleo rurale 5 - scala 1:1.000



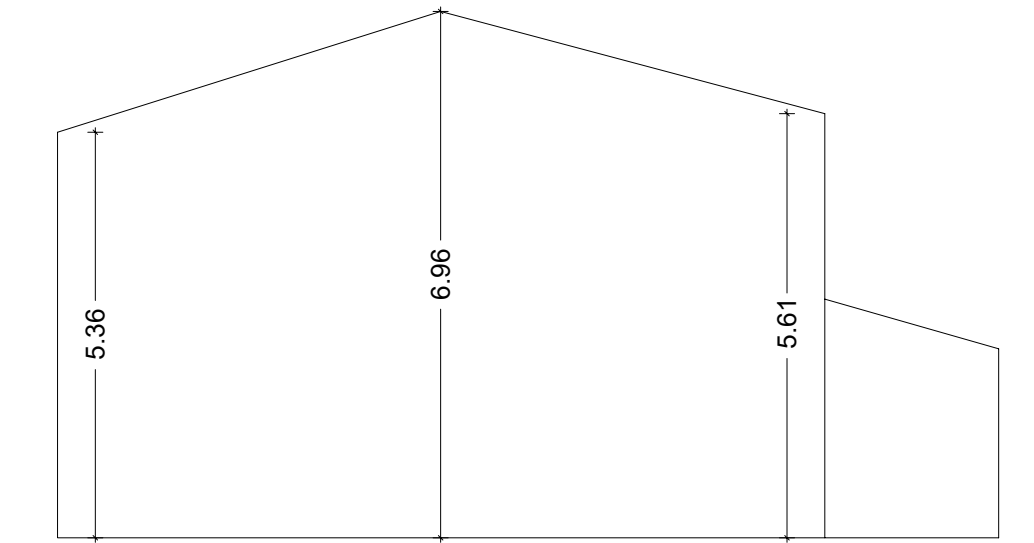
edificio 1 pianta - scala 1:100



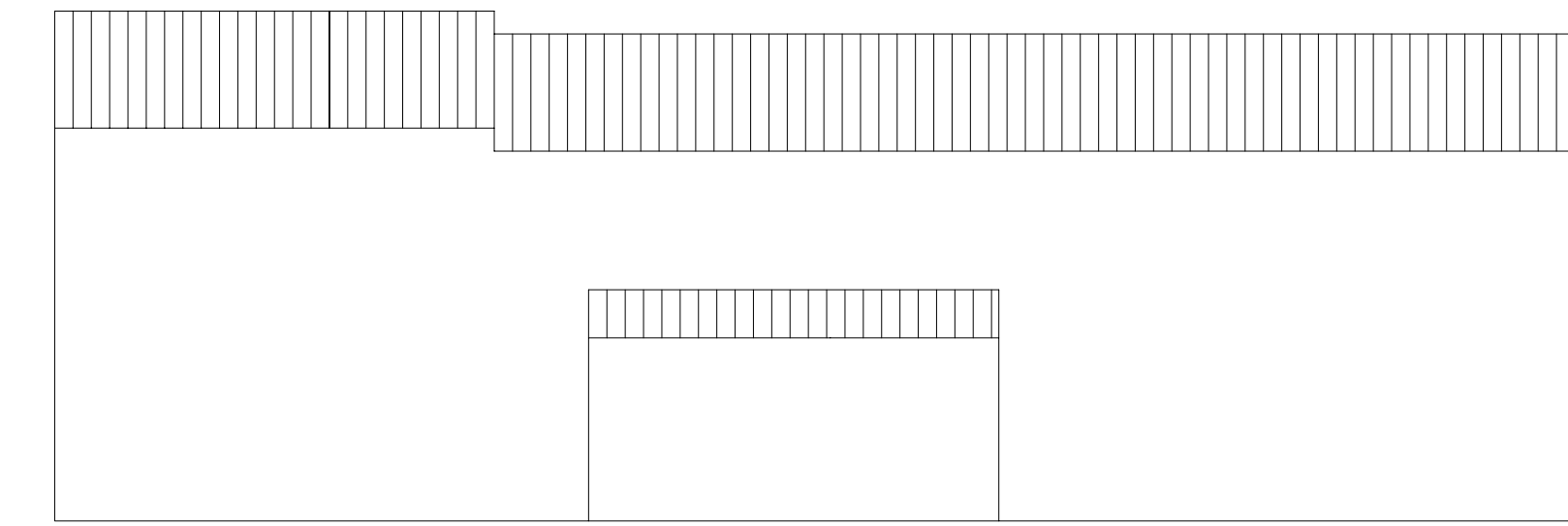
edificio 1 prosp ovest - scala 1:100



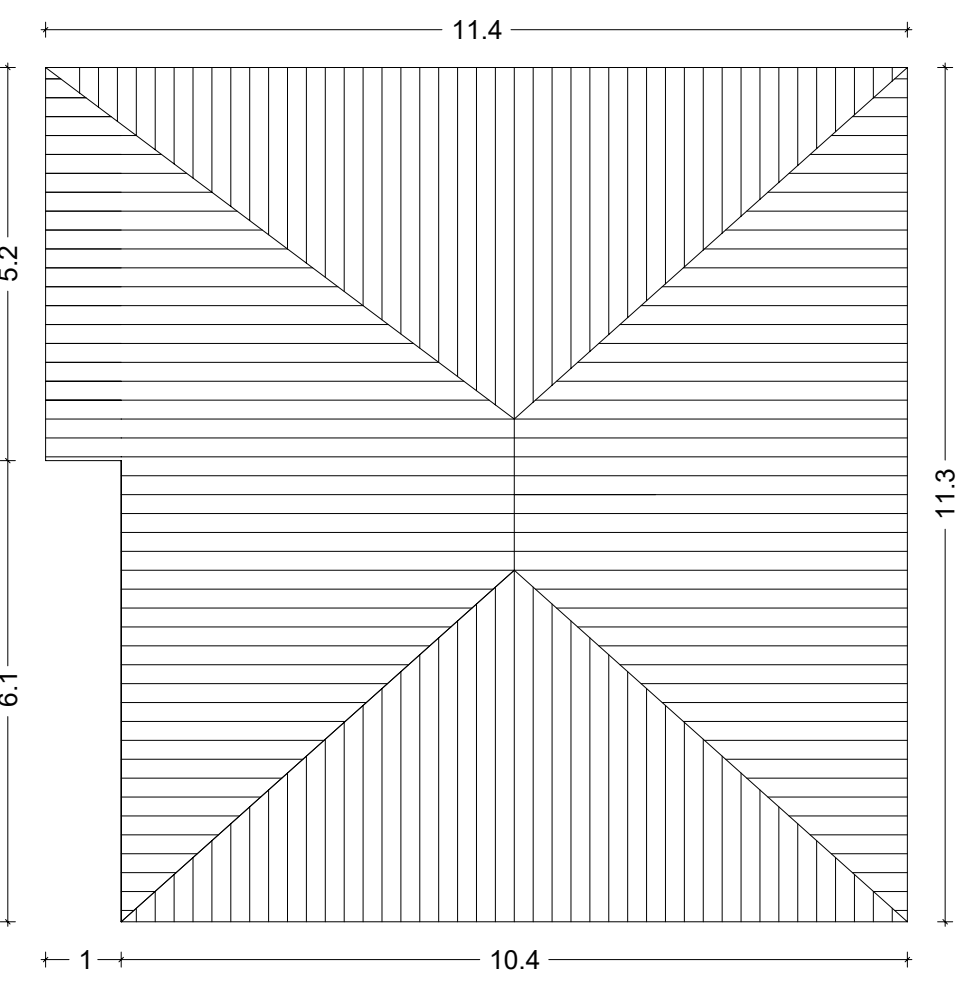
edificio 1 prosp sud - scala 1:100



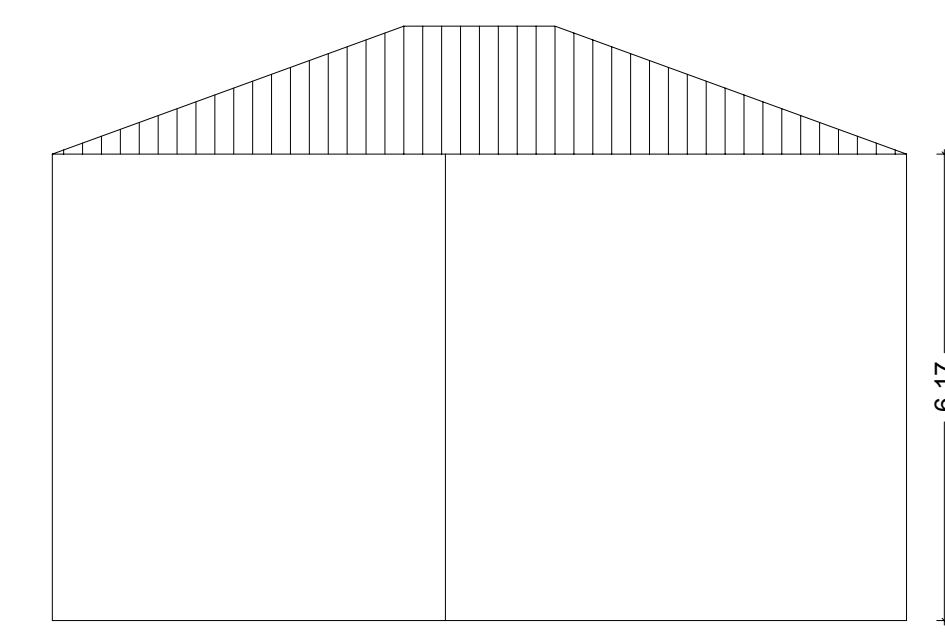
edificio 1 prosp est - scala 1:100



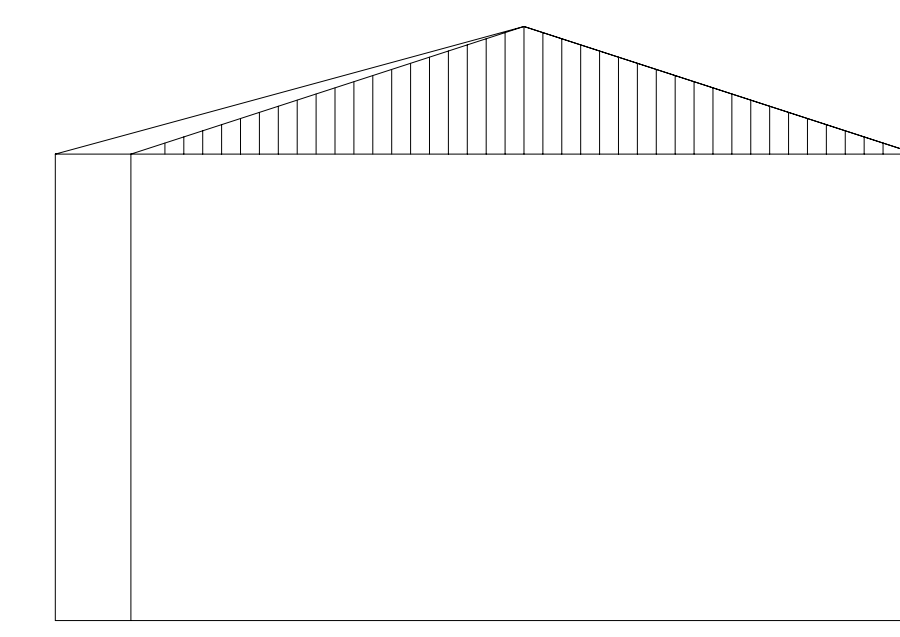
edificio 1 prosp nord - scala 1:100



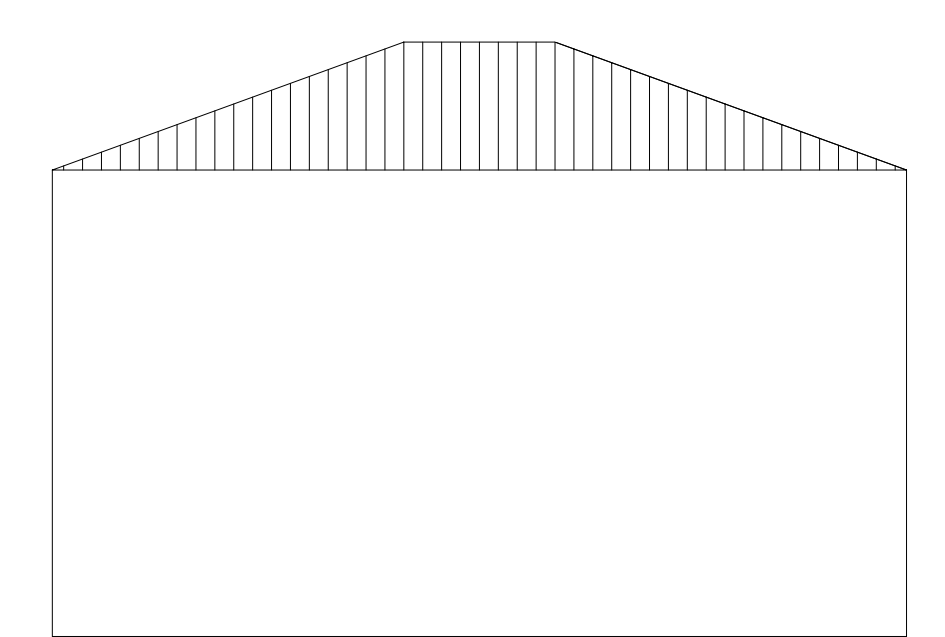
edificio 2 pianta - scala 1:100



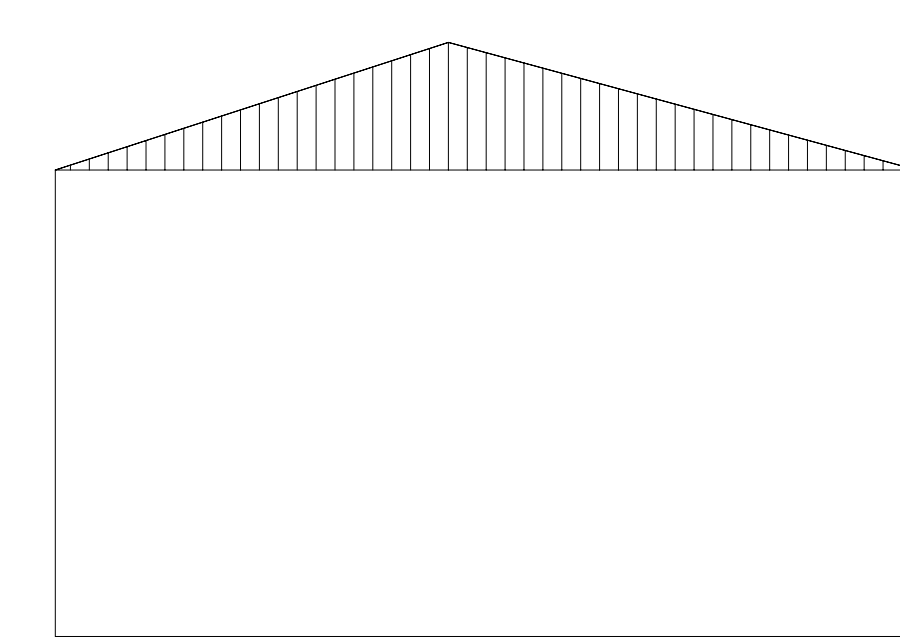
edificio 2 prosp ovest - scala 1:100



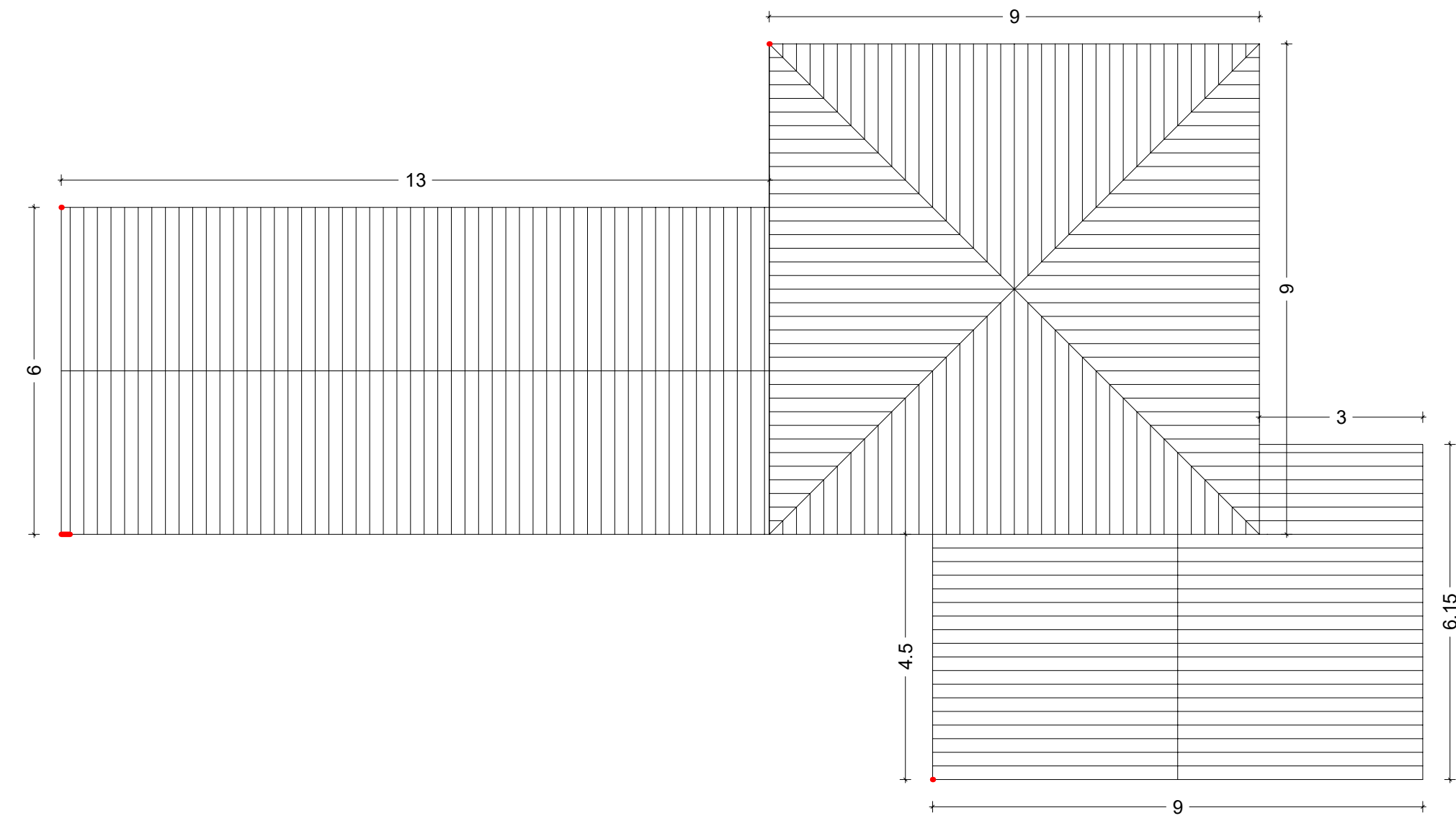
edificio 2 prosp sud - scala 1:100



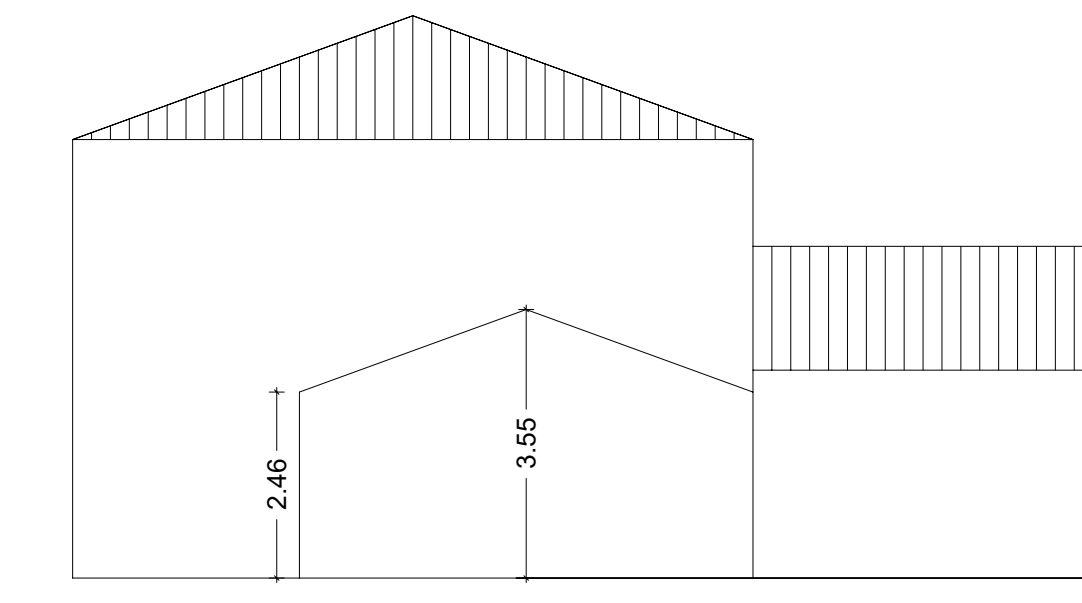
edificio 2 prosp nord - scala 1:100



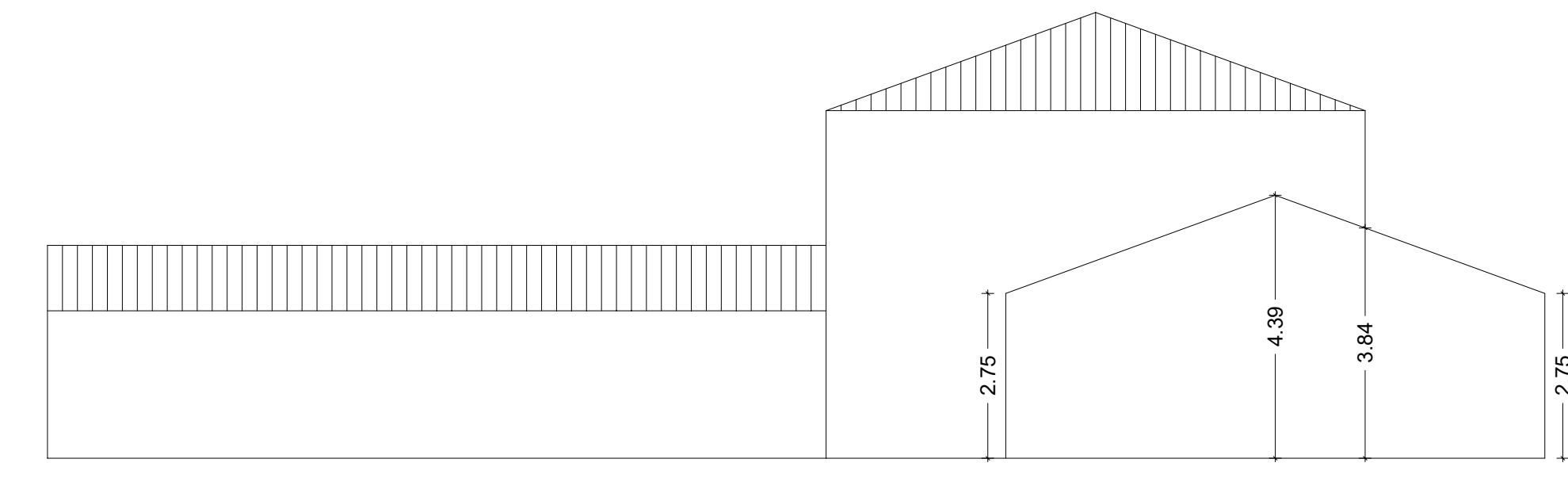
edificio 2 prosp est - scala 1:100



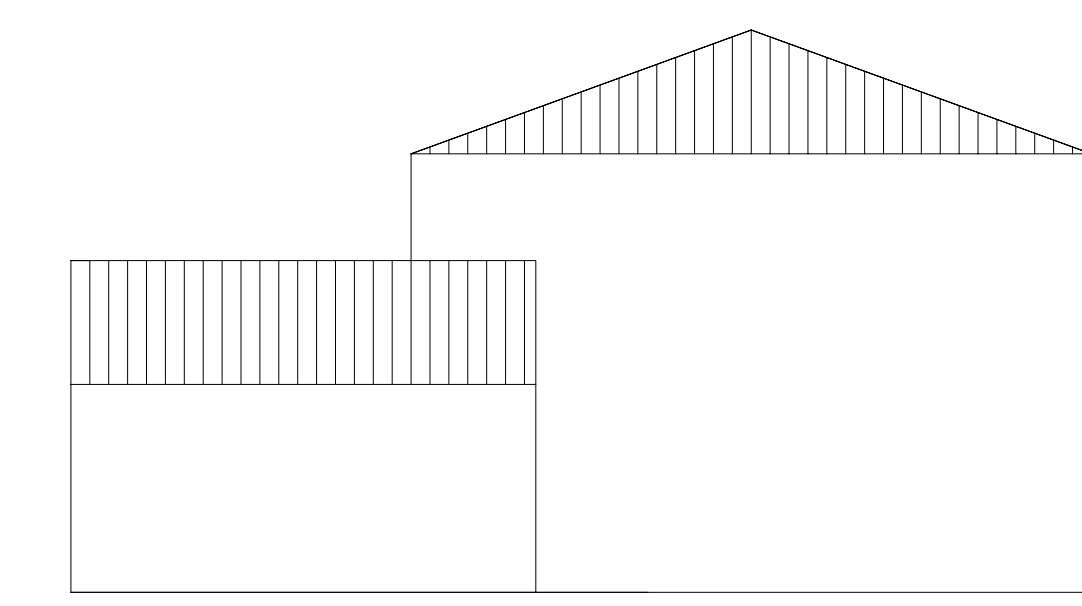
edificio 4 pianta - scala 1:100



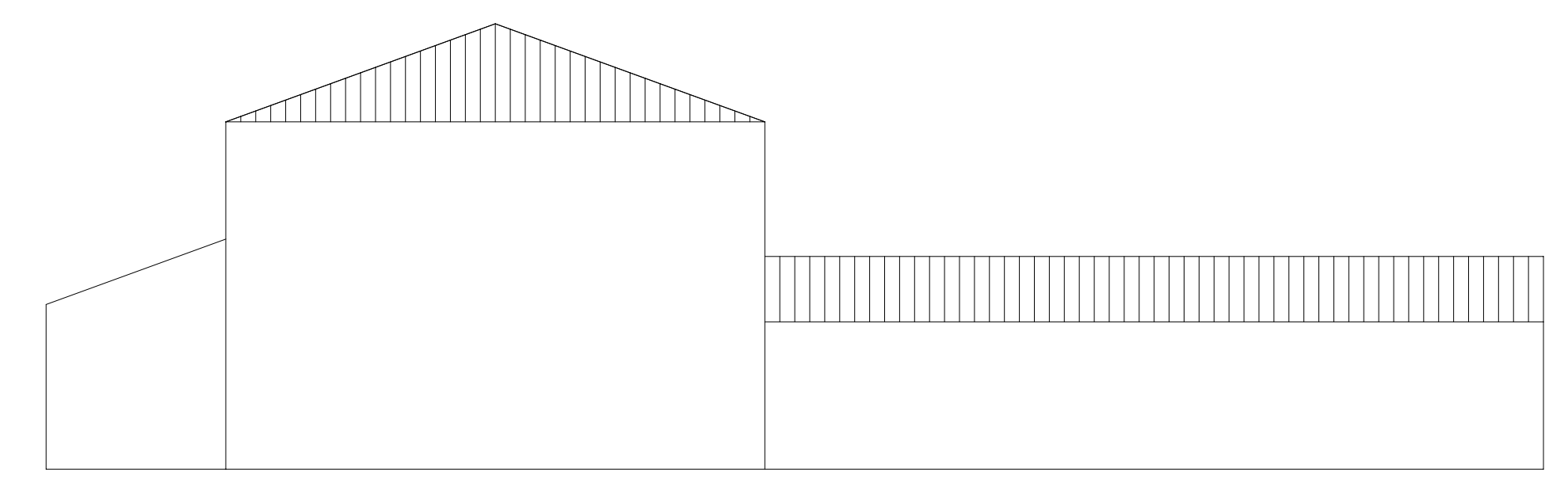
edificio 4 prosp ovest - scala 1:100



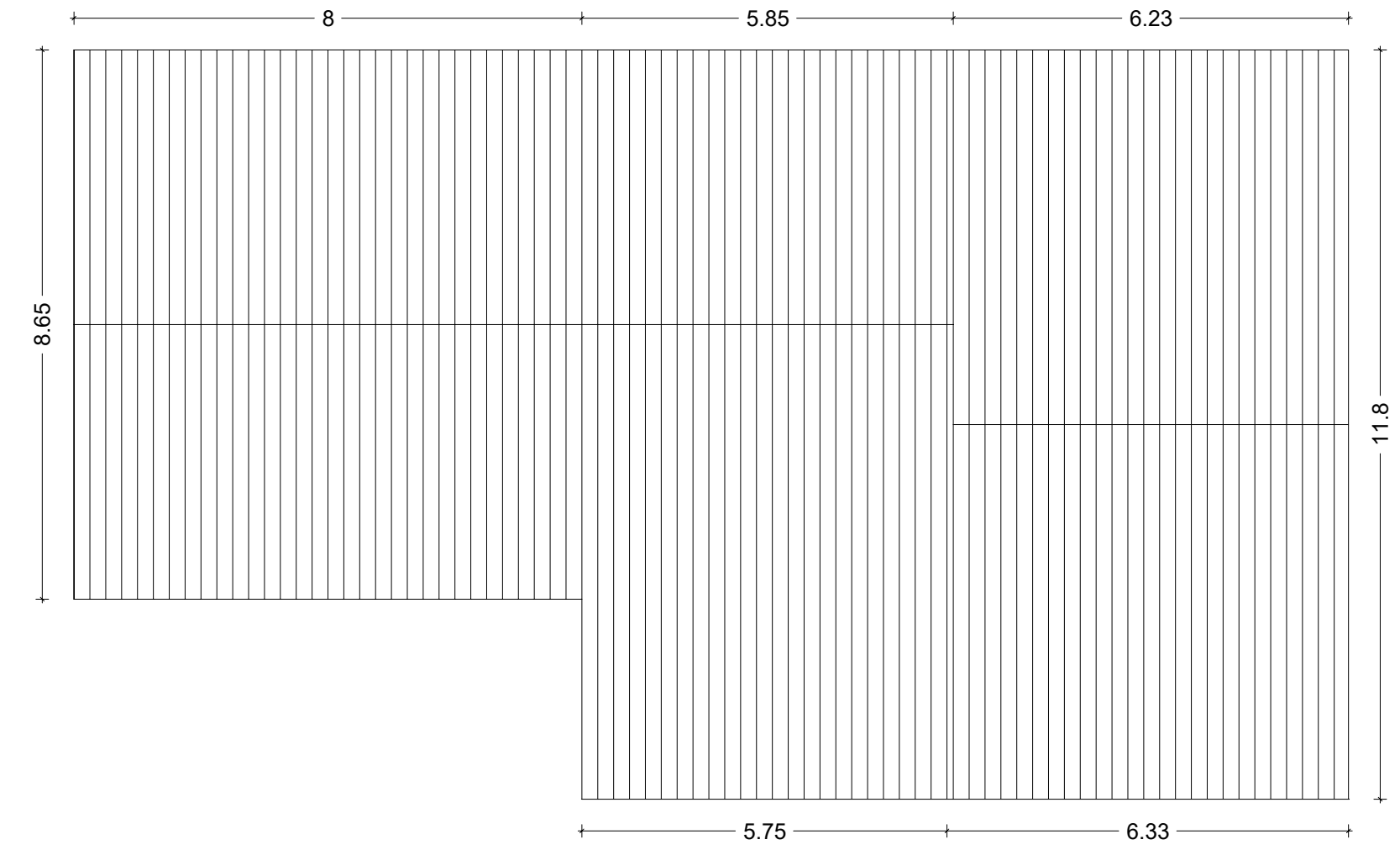
edificio 4 prosp sud - scala 1:100



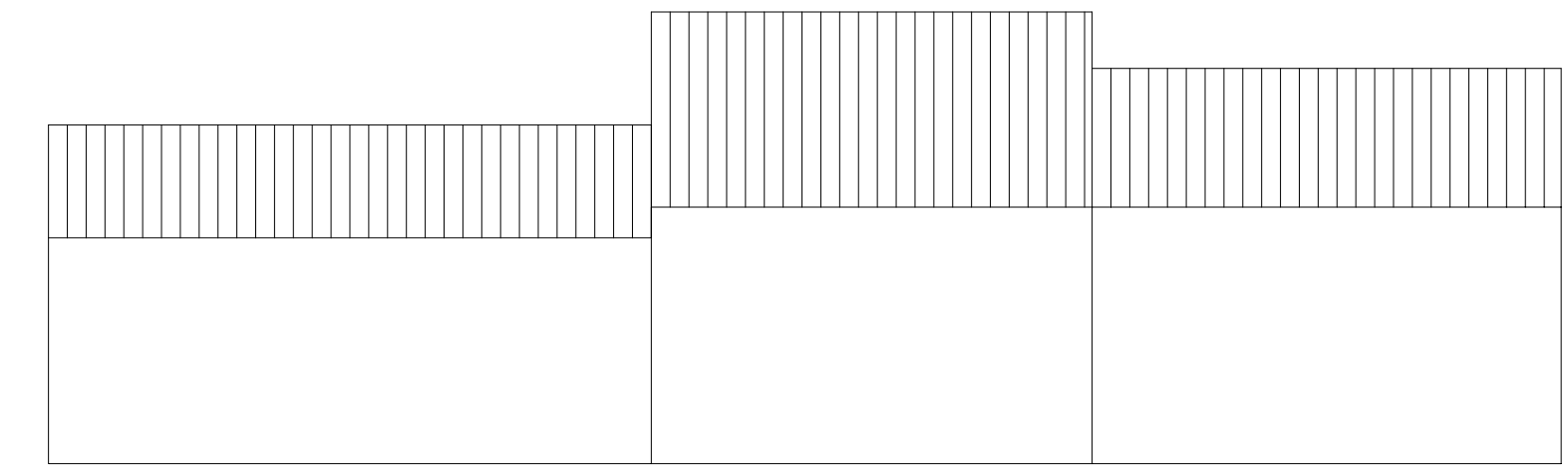
edificio 4 prosp est - scala 1:100



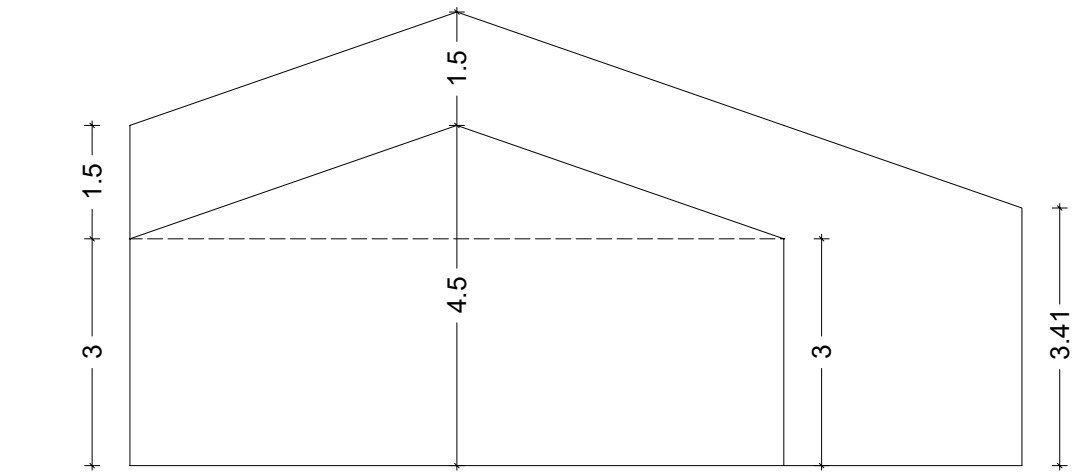
edificio 4 prosp nord - scala 1:100



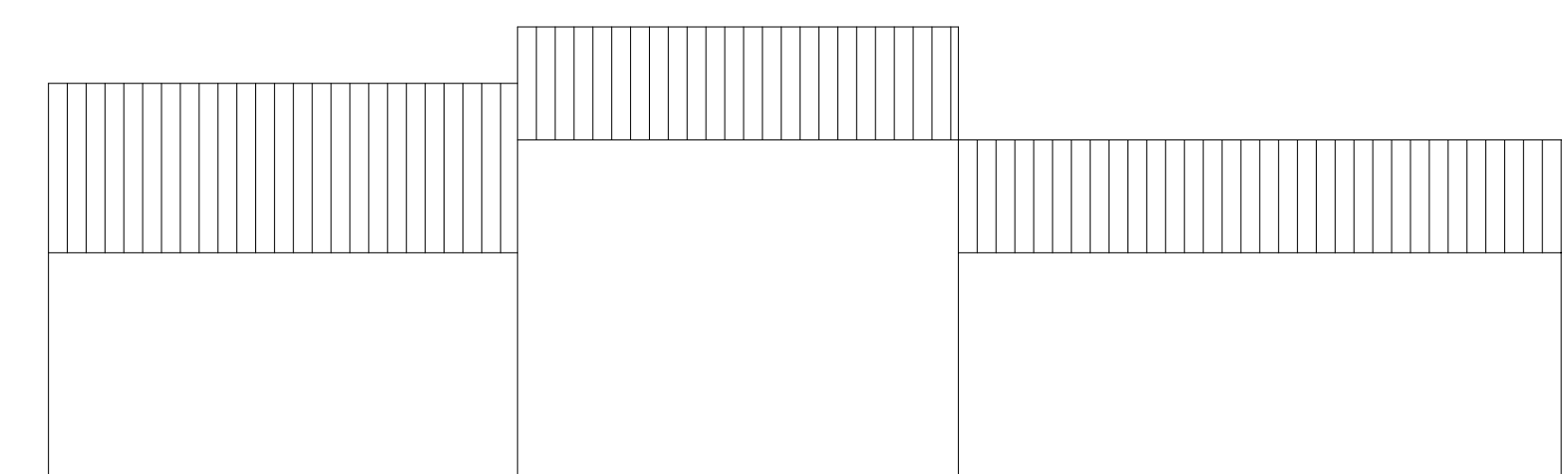
edificio 5 pianta - scala 1:100



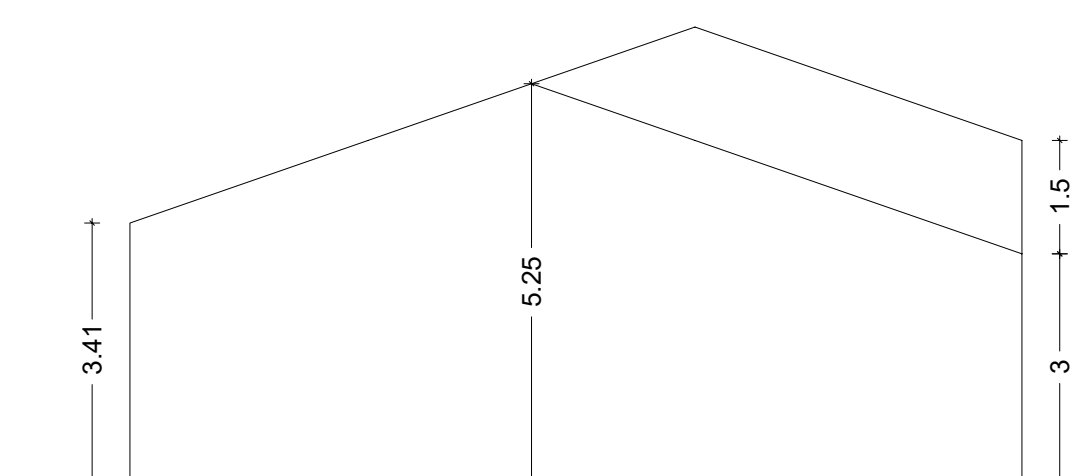
edificio 5 prosp ovest - scala 1:100



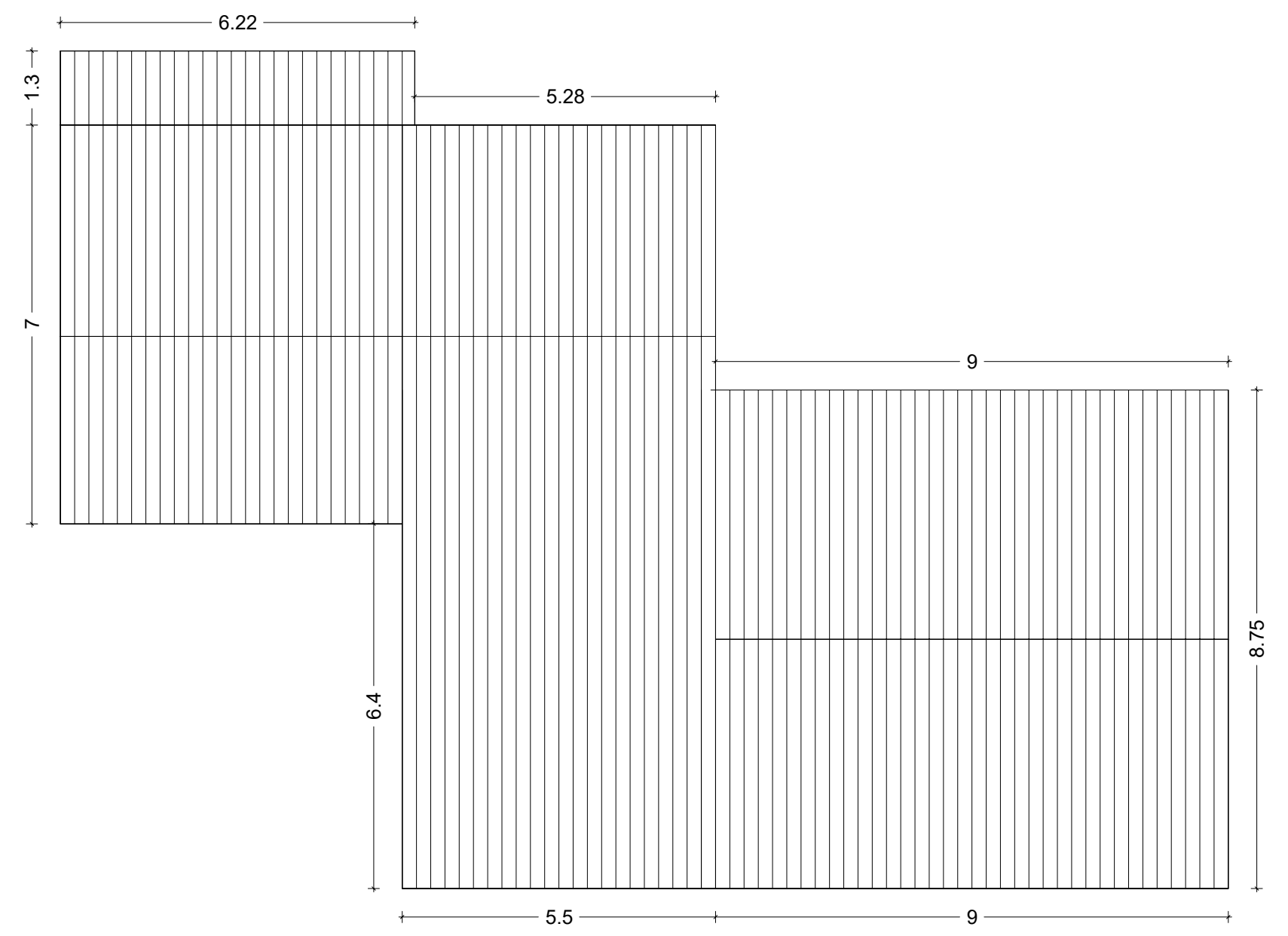
edificio 5 prosp sud - scala 1:100



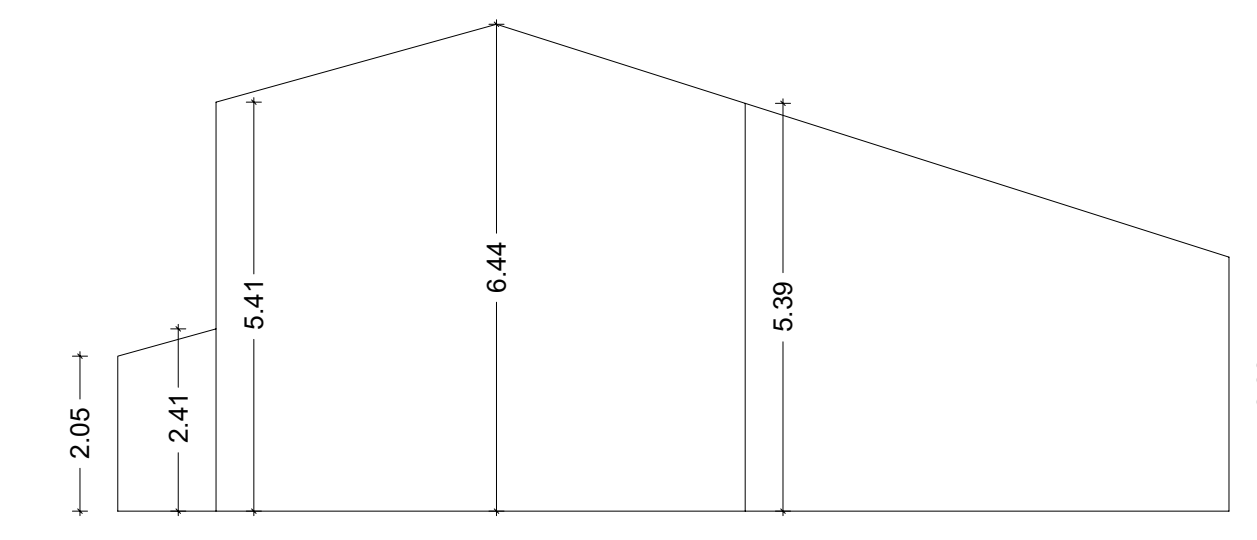
edificio 5 prosp est - scala 1:100



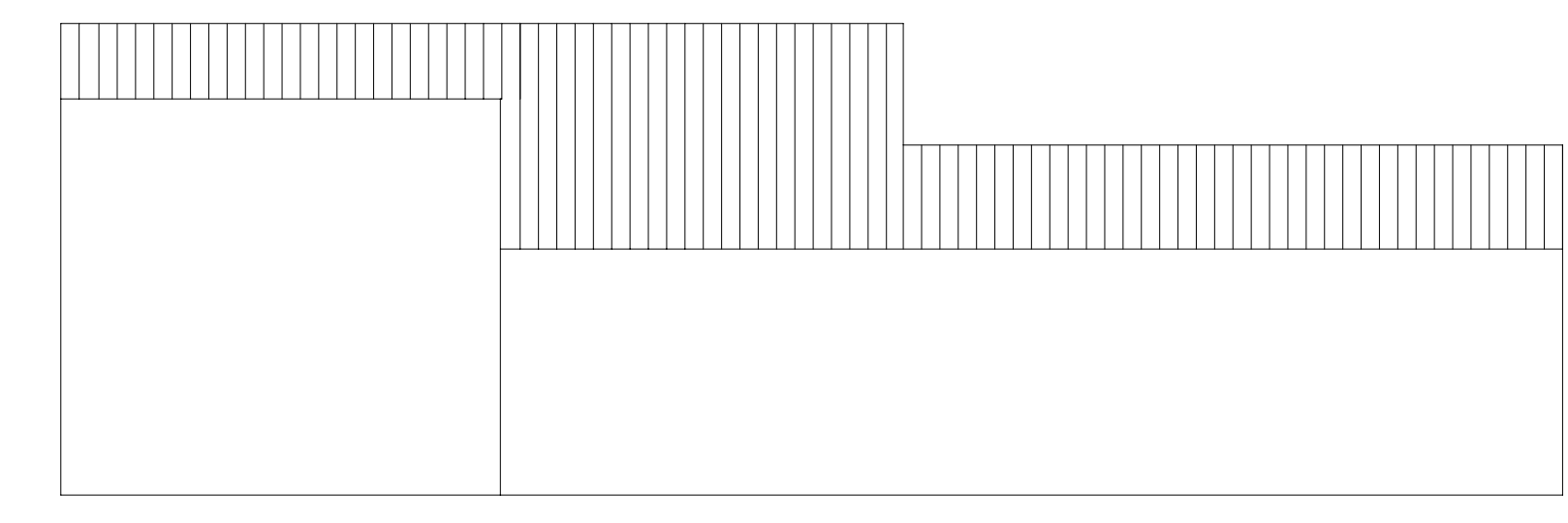
edificio 5 prosp nord - scala 1:100



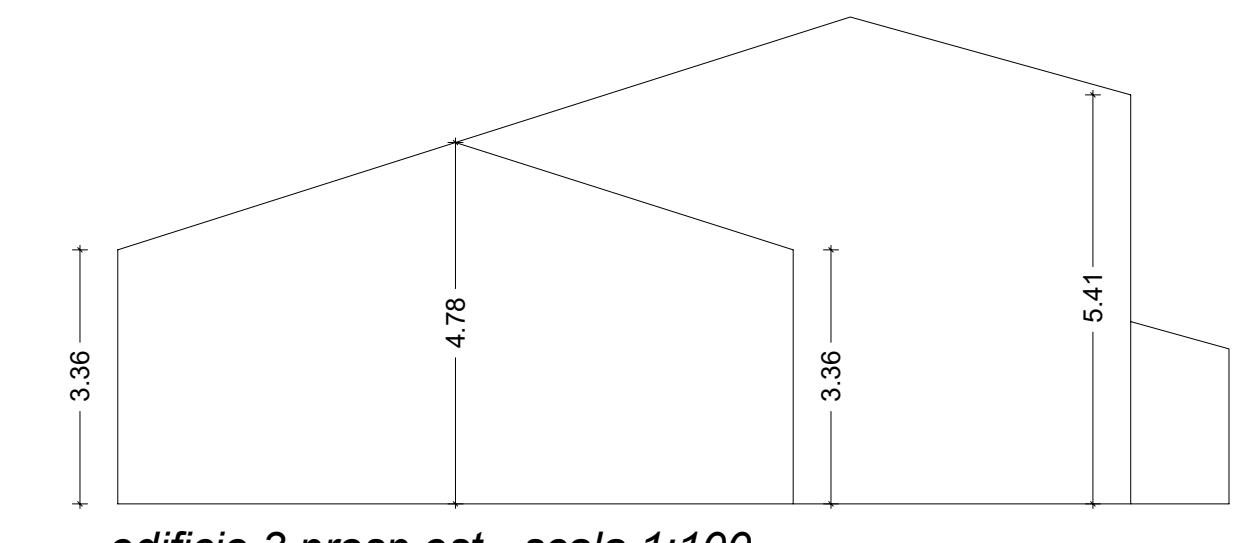
edificio 3 pianta - scala 1:100



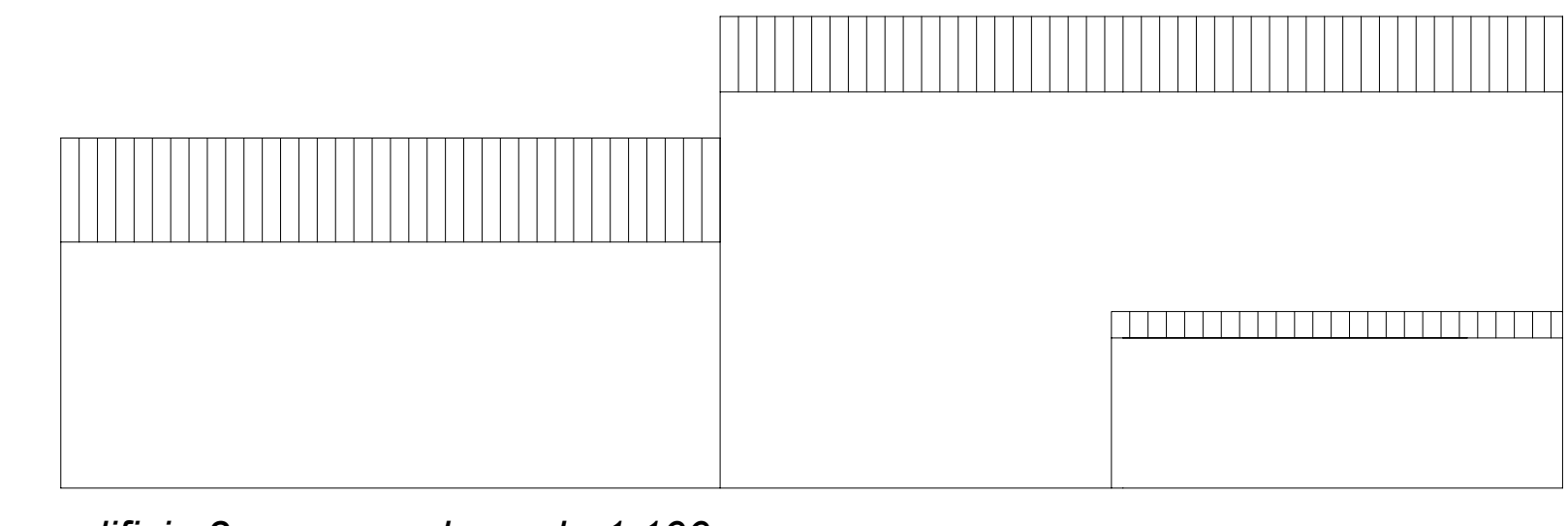
edificio 3 prosp ovest - scala 1:100



edificio 3 prosp sud - scala 1:100



edificio 3 prosp est - scala 1:100



edificio 3 prosp nord - scala 1:100

COMUNE DI ALONTE
provincia di vicenza

PIANO URBANISTICO ATTUATIVO
NUCLEO RURALE 5 "AL PRAME"

ROSSETTO ADRIANO
via Molini
ALONTE (VI)

data: 09.02.2023

TAVOLA UNO

- estratto catastrale
- perimetro nucleo rurale 5
- planim. edifici esistenti
- piante e prospetti edifici res. esistenti

Rossetto Adriano

progetto e dir. lavori
arch. luigi tassoni
via campolongo 23b
36045 alonte - vi
luttassoni@comtec.it

LT.A
firmato digitalmente



estratto PI